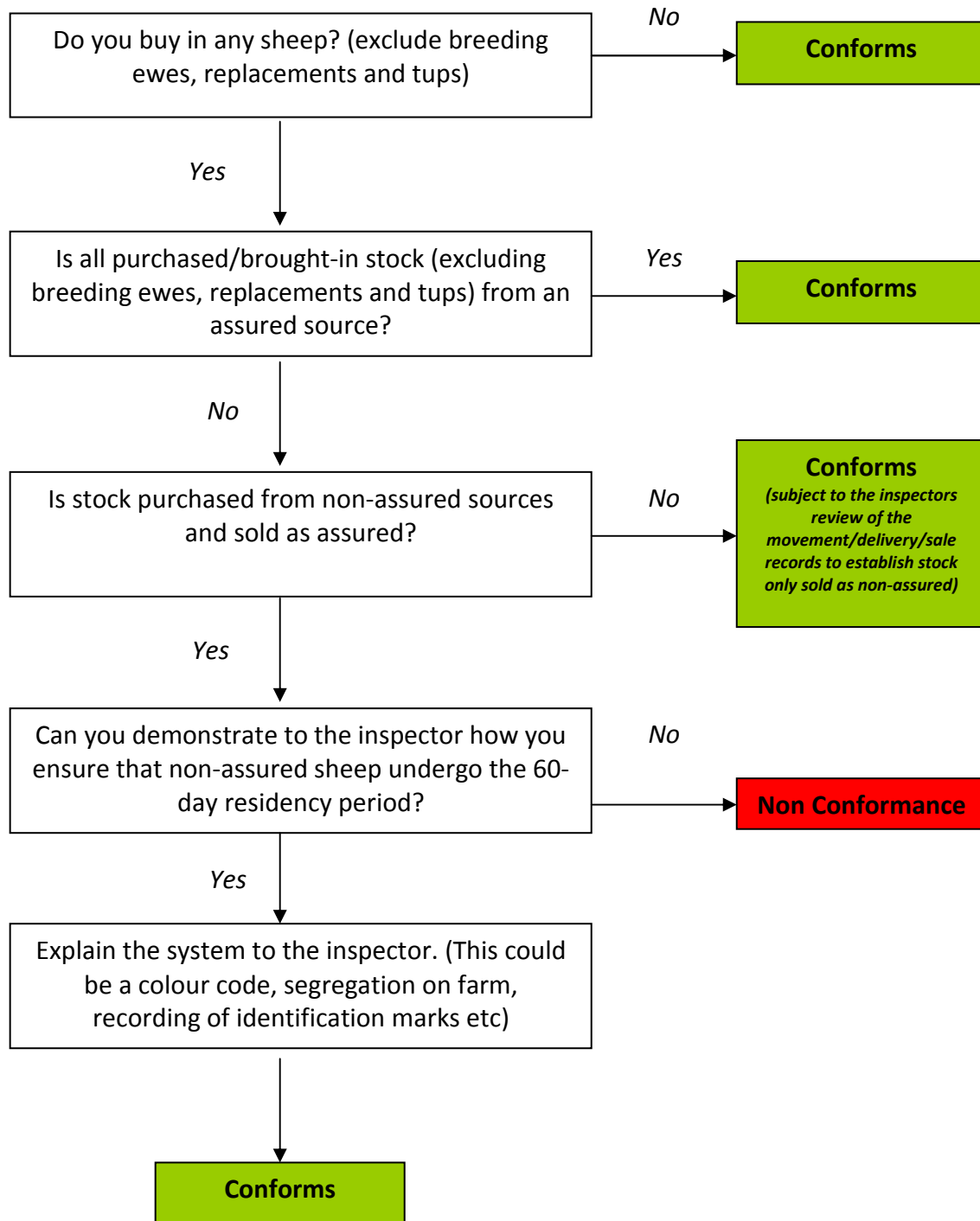


ABM Lamb Assurance Guidance

Standard 1.3 - 60 day Residency Period

Following changes to sheep identification and record keeping legislation in January 2008, ABM has provided further guidance for producers as to how the assurance residency period for sheep will be assessed on farm. The flow chart below provides details of what an inspector will be looking for and what a producer can do to demonstrate, where necessary, that the 60 residency period is being observed.



Representing Red Tractor Beef and Lamb Assurance

